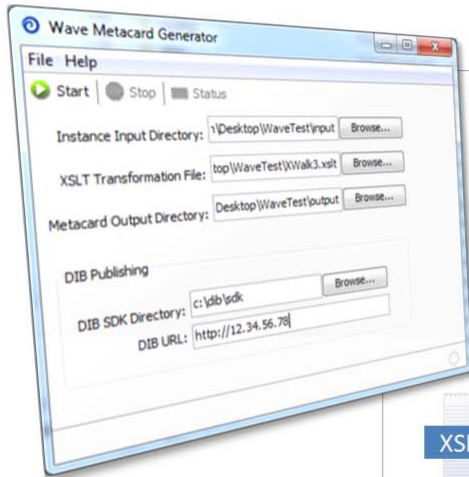
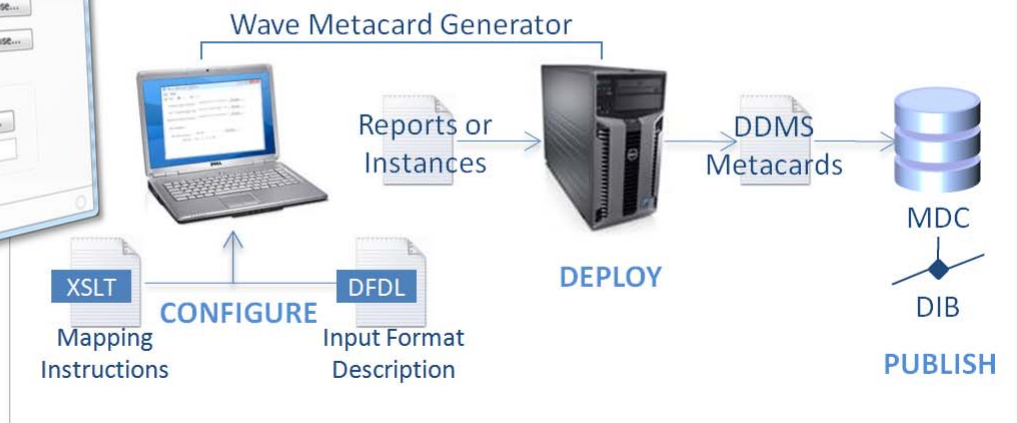


# Wave<sup>®</sup> Metacard Generator and XSLT Generator v2.1



## Automatically Publish *Your* Data to the DIB



The **Wave<sup>®</sup> Metacard Generator and XSLT Generator** are companion Java applications that work together to automatically create metacards for intelligence products, such as CCDF XML instances and other report types, and publish them to a DCGS Integration Backbone (DIB) Metadata Catalog. This solution uses a declarative configuration approach to generate metacards from intelligence products, rather than procedural code. Therefore it is much more adaptable and extendable than brittle, custom-coded resource adapters.

The following **Wave Metacard Generator** configurations have been generated and validated by the DCGS SIGINT Functional Team.

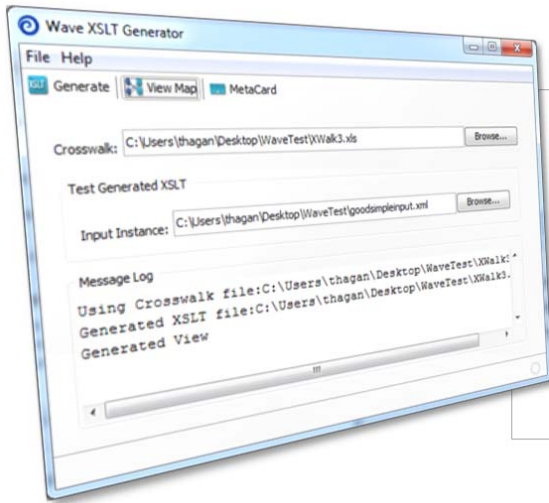
Validated Configurations Based on SIGINT Community Crosswalks	
SOURCE	TYPE
CCDF Instances	XML
Klieglight (KL) TACELINT	Text, with or without USMTF envelope

### KEY FEATURES

- ◆ Automatically generates DDMS 2.0-compliant metacards
- ◆ Automatically publishes metacards to a DIB
- ◆ Declarative, crosswalk-driven transformation approach
- ◆ Adaptable and extendable for new or updated input and output formats
- ◆ Software available as DoD Community Source

### BENEFITS: SPEED, INTEROPERABILITY, AGILITY

- ◆ **Post Quicker.** The automated metacard generation process works much faster and more consistently than a human could do it, so products get posted to the DIB sooner and out to your customers faster.
- ◆ **Achieve Community Interoperability.** Use validated Community Crosswalks to facilitate sharing of products.
- ◆ **Easily Adapt to Change.** When input or output formats change, *don't write new code*. Instead, to add new report formats, or accommodate changes or variants of existing formats, simply modify the crosswalk rules. This will also make it easier to comply with new output formats such as UCore or DDMS 3.1.



## Easily Adapt to Changes Convert Your Crosswalk into a Transformation



### Add a New Source or Target Format

The **XSLT Generator** application will produce mapping instructions for your XML source format in an XSLT configuration file. You'll need a crosswalk. A crosswalk contains the mappings, expressed as XPaths, to produce a DDMS Metacard from the source XML. Typically, a data modeler/ subject matter expert builds and validates a crosswalk. Community Crosswalks may be available from your community's metadata team.

### Get Support and Expert Services

Modus Operandi developed the **Wave Metacard Generator and XSLT Generator** tools, and offers support and expert consulting services. For more information, contact us via email or telephone.

Email: [waveSupport@modusoperandi.com](mailto:waveSupport@modusoperandi.com)

Voice: (321) 473-1473

If you are a...	Modus Operandi offers the following service:	
SIGINT Producer	<b>SIGINT Jump Start</b>	We configure and validate your Metacard Generator in 2 weeks per report format.
INT Producer	<b>Custom Configuration</b>	We configure a Metacard Generator based on a community crosswalk (e.g., IMINT, HUMINT, MASINT, etc.) for your report format(s). We can also perform a DDMS 3.1 impact assessment.
Metadata Engineer	<b>Crosswalk Assistance</b>	We provide expert consulting services and tools to assist with generation and validation of community crosswalks, including transformation business rules.
Systems Integrator or Field Service Organization	<b>Basic Production Support</b>	We provide software updates plus Tier 2 email and phone support that covers software installation and basic tool operation.

## Software Facts

### Software Requirements for Version 2.1

- Supported OS: Windows (2003 Server, XP, Vista, or 7) or Linux
- Prerequisite Software – not distributed: Java 6 (1.6.17) Java Runtime Environment (JRE)

### Version Compatibility

- The latest version v2.1 is compatible with XSLTs generated by v1.0
- Users of v1.0 for CCDF instances need not upgrade to v2.1

### Software License Information

The **Wave Metacard Generator and XSLT Generator** are licensed computer software subject to the DoD Community Source (DCS) Usage Agreement as well as third party open source software licenses.

#### MELBOURNE, FL

709 S. HARBOR CITY BLVD., SUITE 400

MELBOURNE, FL 32901-1936

PHONE: (321) 473-1400

FAX: (321) 473-1499

[WWW.MODUSOPERANDI.COM](http://WWW.MODUSOPERANDI.COM)



Wave and the Wave swirl logo are registered trademarks of Modus Operandi, Inc.  
Copyright 2011 Modus Operandi, Inc.