

# Building a Data-Driven Society

Jake Porway  
Founder and Director  
DataKind







Watch Instantly

Just for Kids

Browse DVDs

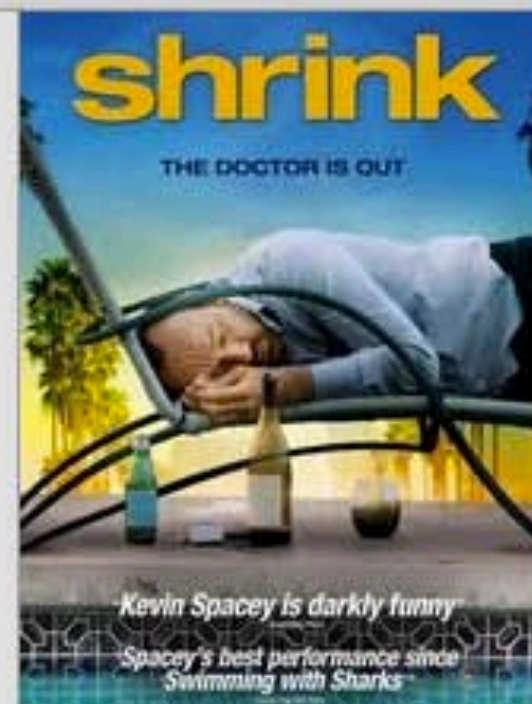
Your Queue

★ Suggestions for You

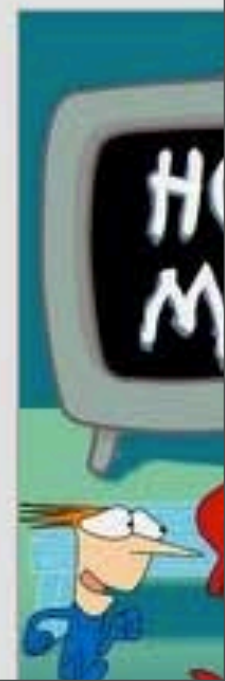
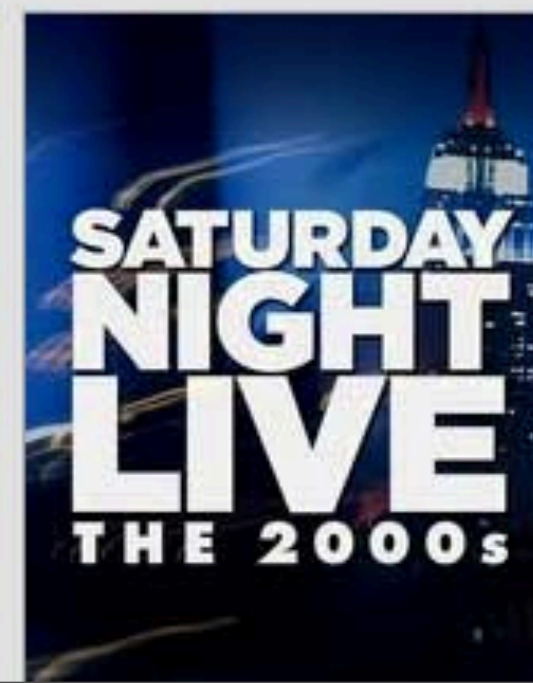
Genres ▾

New Arrivals

Instantly to your TV



## Popular on Netflix







Monument-National, 1182 St-Laurent



Get directions

My places



A

My Location

B

Monument-National, 1182 St-Laurent

Add Destination - Show options

GET DIRECTIONS

Suggested routes

I-87 N

375 mi, 6 hours 35 mins

Driving directions to Monument-National

3D

This route has tolls.



My Location

Dekalb Ave

1. Head **west** on **Dekalb Ave** toward **Adelphi St**

0.6 mi

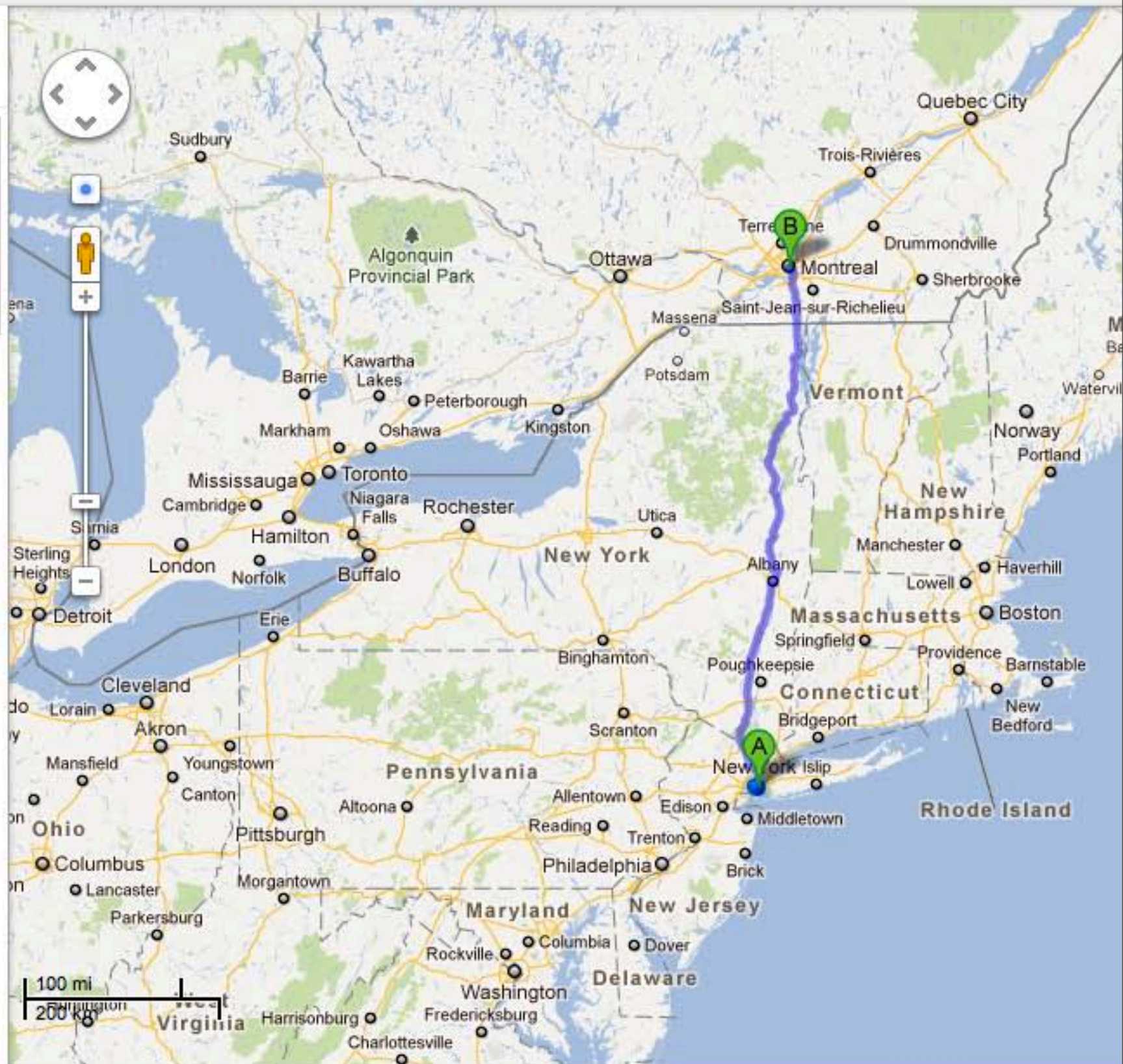
2. Turn right onto **Flatbush Avenue Ext**

0.5 mi

3. Turn left onto **Tillary St**

0.2 mi

4. Turn right onto **Adams St**







Roll over image to zoom in



Snuggie

## Snuggie Fleece Blanket

★★★★☆ (175 customer reviews) |  Like (10)List Price: ~~\$10.99~~Price: **\$9.99** & eligible for **FREE Super Saver Shipping** on orders over \$25. [Details](#)You Save: **\$1.00 (9%)**Color: **Blue****In Stock.**Sold by [Galactics](#) and [Fulfilled by Amazon](#). Gift-wrap available.**Want it delivered Monday, May 7?** Order it in the next **18 hours and 5 minutes**, and choose **On** at checkout. [Details](#)**27 new** from **\$6.89**

## What Other Items Do Customers Buy After Viewing This Item?



Snuggie Original Fleece Blanket with Sleeves, BCRF Pink Snuggie

★★★★☆ (175)

**\$6.79**

Snuggie Super Soft Fleece Blanket with free Booklight - Blue Snuggie

★★★★☆ (9)

**\$8.47**[Allstar Marketing SN591106 Purple Snuggie](#) As Seen On TV



## Mark Zuckerberg

[Add as Friend](#)

Wall

Info

Photos

Boxes

[Filters](#)

## RECENT ACTIVITY

Mark commented on Andrew 'Boz' Bosworth's link.

Mark likes David Reiss's status.

Mark and Dave Kling are now friends.

Mark likes Bret Taylor's link.

[View Photos of Mark \(596\)](#)[View Videos of Mark \(21\)](#)[Send Mark a Message](#)[Poke Mark](#)

## Information

Networks:

Facebook  
Harvard Alum

Birthday:

May 14, 1984

## Mutual Friends

56 friends in common [See All](#)Josh  
ElmanCheryl  
Contee

Chris Kelly

## Friends

901 friends [See All](#)Annie  
MedhurstJesse  
Ellish

Rena Xu



## Mark Zuckerberg Bye bye regional networks :)

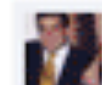
## An Open Letter from Facebook Founder Mark Zuckerberg

[blog.facebook.com](#)

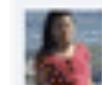
It has been a great year for making the world more open and connected. Thanks to your help, more than 350 million people around the world are using Facebook to share their lives online. To make this possible, we have focused on giving you the tools you need to share and control your information...

 December 1 at 11:46pm · [Share](#)

Adam Conner, Bret Taylor, Doug Sherrets and 51 others like this.

[View all 14 comments](#)

**Frank Aguilo** No dislike button, it will just bring a lot of drama to the facebook experience, make for lots of hostility and thereby drive people away from the fb.  
December 3 at 2:32am



**Tina Liu** I really liked networks though! It helps to remind you how you know a person, as well as where they are right now (which college, which company, etc.). I even liked the friend details feature, but that seems to have been removed as well. Is there some way to keep these details somewhere?  
December 4 at 4:23pm



**Teresa Valdez Klein** Am I the only person who thinks it looks really weird to have your status hanging all the way off to the right margin of the righthand column on the Facebook profile layout? [Mark Zuckerberg](#) needs to have a talk with his UI designers. :-)

November 25 at 8:09pm · [View Post](#)

## RECENT ACTIVITY

Mark likes Paul Saab's link.

Mark became a fan of Asana

[Create an Ad](#)

## Begin your New Career

X



Learn about Web Design programs at The Art Institute of Pittsburgh – online division. The journey begins now.

[Like](#)

## Masters in Info. Systems

X



Become an IT leader with Boston University's online MS in Computer Information Systems. Learn from a faculty of Industry Professionals!

[Like](#)

## Lori Taylor

X



Want to learn how I've made BILLIONS for my clients using direct marketing techniques and you can too? Become a fan today for freebies!



# Who Will Build the Data-Driven Society?

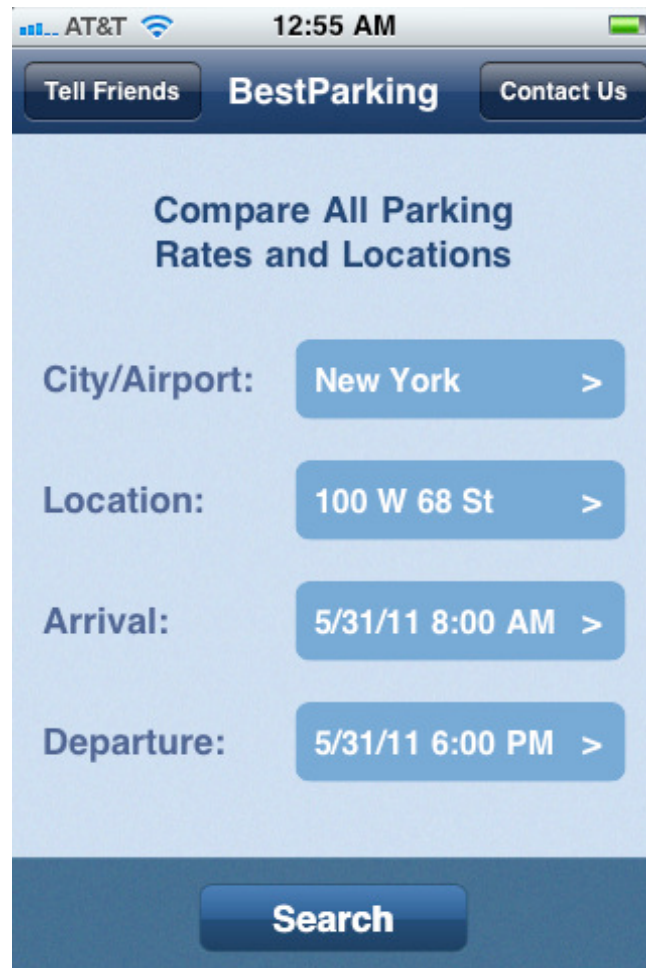








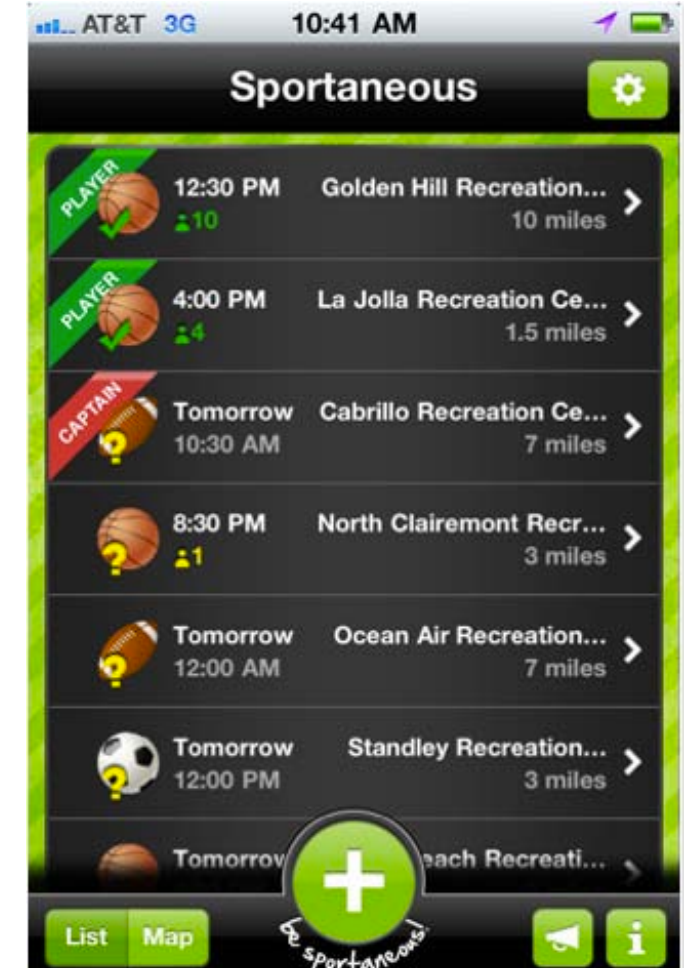
# The Results?



<http://bestparking.com>



<http://salelocator.com>



<http://sportaneous.com>











freshfix<sup>α</sup>

An interactive tool for building sustainable relationships between farmers and New Yorkers.

Search for farmers by product name, zip, or both!



We've won the most popular app award on Facebook. Thank you all for voting!

## FIND FRESH PRODUCTS

From local farmers markets in NYC. Easy access to fresh and affordable products!

## CONNECT WITH GREEN FARMERS

Building sustainable relationship with local farmers and NYC community!

## BECOME A GREEN CITIZEN

Enriching lifestyle by adopting more sustainable practices and inspiring your community!















**DataKind**  
USING DATA IN THE SERVICE OF HUMANITY









6			Alaska	Total	less than 18	2009	Percent
7			Arizona		Male	2009	Percent
8			Arizona		Female	2009	Percent
9			Arizona	Total	less than 18	2009	Percent
10			Arkansas		Male	2009	Percent
11			Arkansas		Female	2009	Percent
12			Arkansas	Total	less than 18	2009	Percent
13			California		Male	2009	Percent
14			California		Female	2009	Percent
15			California	Total	less than 18	2009	Percent
16			Colorado		Male	2009	Percent
17			Colorado		Female	2009	Percent
18			Colorado	Total	less than 18	2009	Percent
19			Connecticut		Male	2009	Percent
20			Connecticut		Female	2009	Percent
21			Connecticut	Total	less than 18	2009	Percent
22			Delaware		Male	2009	Percent
23			Delaware		Female	2009	Percent
24			Delaware	Total	less than 18	2009	Percent
25	District	of	Columbia		Male	2009	Percent
26	District	of	Columbia		Female	2009	Percent
27	District	of	Columbia	Total	less than 18	2009	Percent
28			Florida		Male	2009	Percent
29			Florida		Female	2009	Percent
30			Florida	Total	less than 18	2009	Percent





Introspect

- what are we doing?
- what are we not doing?
- what are we trying to do?
- what are we not trying to do?
- what are we trying to do better?
- what are we not trying to do better?

Base Lines

- one rough draft
- one outline
- one paper
- one presentation
- one video
- one website
- one book
- one report
- one article
- one podcast
- one blog
- one newsletter
- one podcast
- one blog
- one newsletter

THIS BAG IS MADE FROM  
100% RECYCLED PAPER  
AND IS COMPLETELY RECYCLABLE.

HECHO EN  
VENICE

D.C.  
kids  
count

DELL

GardnerWebb



5	Alaska			Female		2009	Percent	
6	Alaska			Total	less than 18	2009	Percent	
7	Arizona			Male		2009	Percent	
8	Arizona			Female		2009	Percent	
9	Arizona			Total	less than 18	2009	Percent	
10	Arkansas			Male		2009	Percent	
11	Arkansas			Female		2009	Percent	
12	Arkansas			Total	less than 18	2009	Percent	
13	California			Male		2009	Percent	
14	California			Female		2009	Percent	
15	California			Total	less than 18	2009	Percent	
16	Colorado			Male		2009	Percent	
17	Colorado			Female		2009	Percent	
18	Colorado			Total	less than 18	2009	Percent	
19	Connecticut			Male		2009	Percent	
20	Connecticut			Female		2009	Percent	
21	Connecticut			Total	less than 18	2009	Percent	
22	Delaware			Male		2009	Percent	
23	Delaware			Female		2009	Percent	
24	Delaware			Total	less than 18	2009	Percent	
25	District of Columbia				Male	2009	Percent	
26	District of Columbia				Female	2009	Percent	
27	District of Columbia				Total	less than 18	2009	Percent
28	Florida			Male		2009	Percent	
29	Florida			Female		2009	Percent	



# 2012 e-Databook

DC Action for Children designed the maps and interactive tools here to bring to life our data on the well-being of children and families, neighborhood by neighborhood. We invite you to use them to learn what you want to know about the health, safety and future success of children, families and neighborhoods in DC. We look forward to hearing your analysis!

## CROSS-TAB ANALYSIS

[Distressed neighborhoods](#)[Child success](#)[Assets](#)[Back to top](#)

### High poverty

#### NEIGHBORHOODS

**Brookland, Brentwood,  
Langdon**

Population (Total):	8,459
Population (Under 18):	1,845
Median family income:	\$58,400
Single mother families:	54.6%
Children in poverty:	41.3%

#### Race & ethnicity (18 and over):

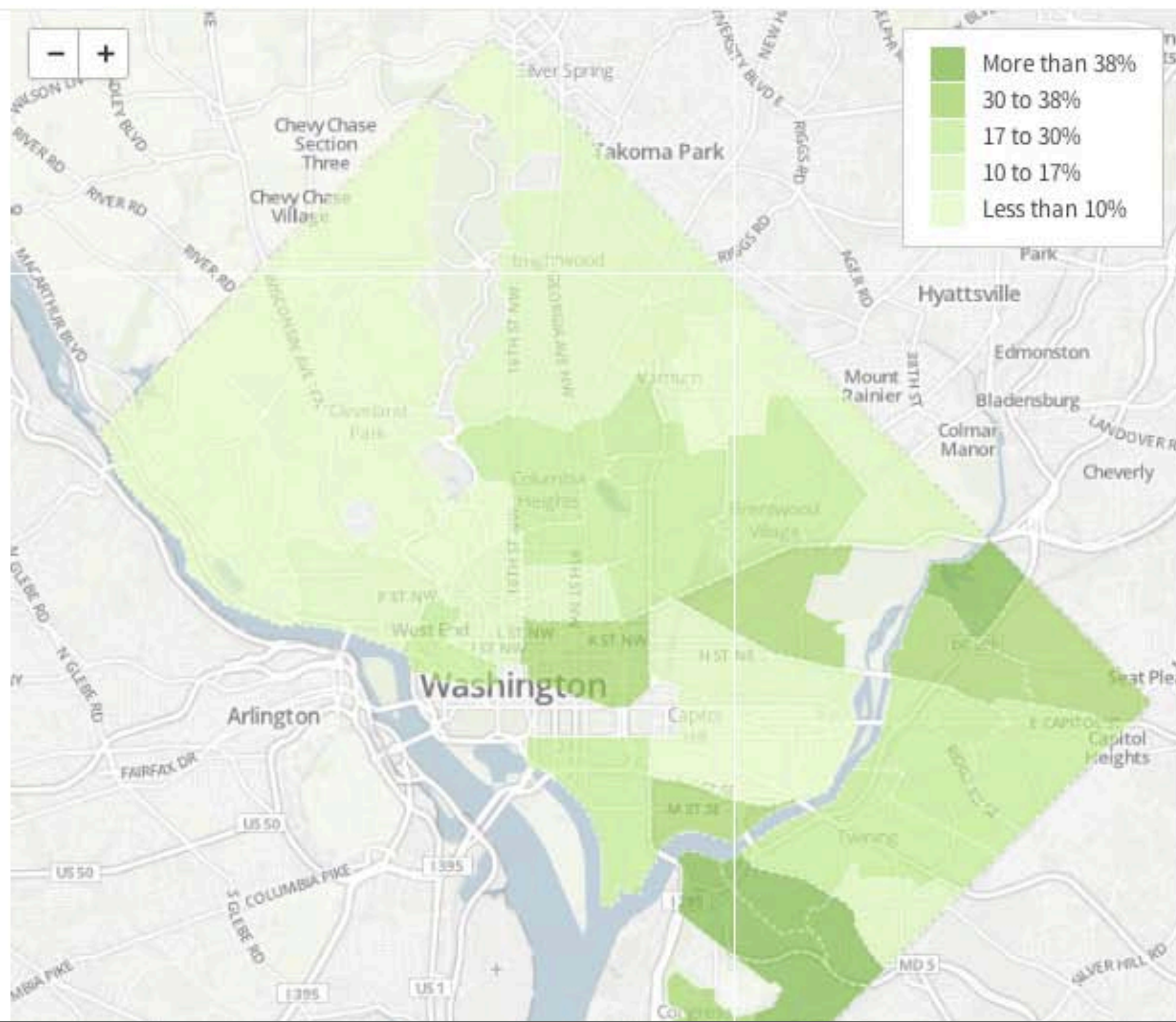


White:	13.5%
Black:	76.8%
Hispanic:	6.1%
Asian/Other:	3.6%

#### Race & ethnicity (under 18):



White:	6.3%
Black:	82.9%
Hispanic:	7.3%
Asian/Other:	3.5%







**NYC**

Information  
Technology &  
Telecommunications



NYC Parks





1) Mapping trees to block segments

Problem: Do pruning events mitigate future work orders?

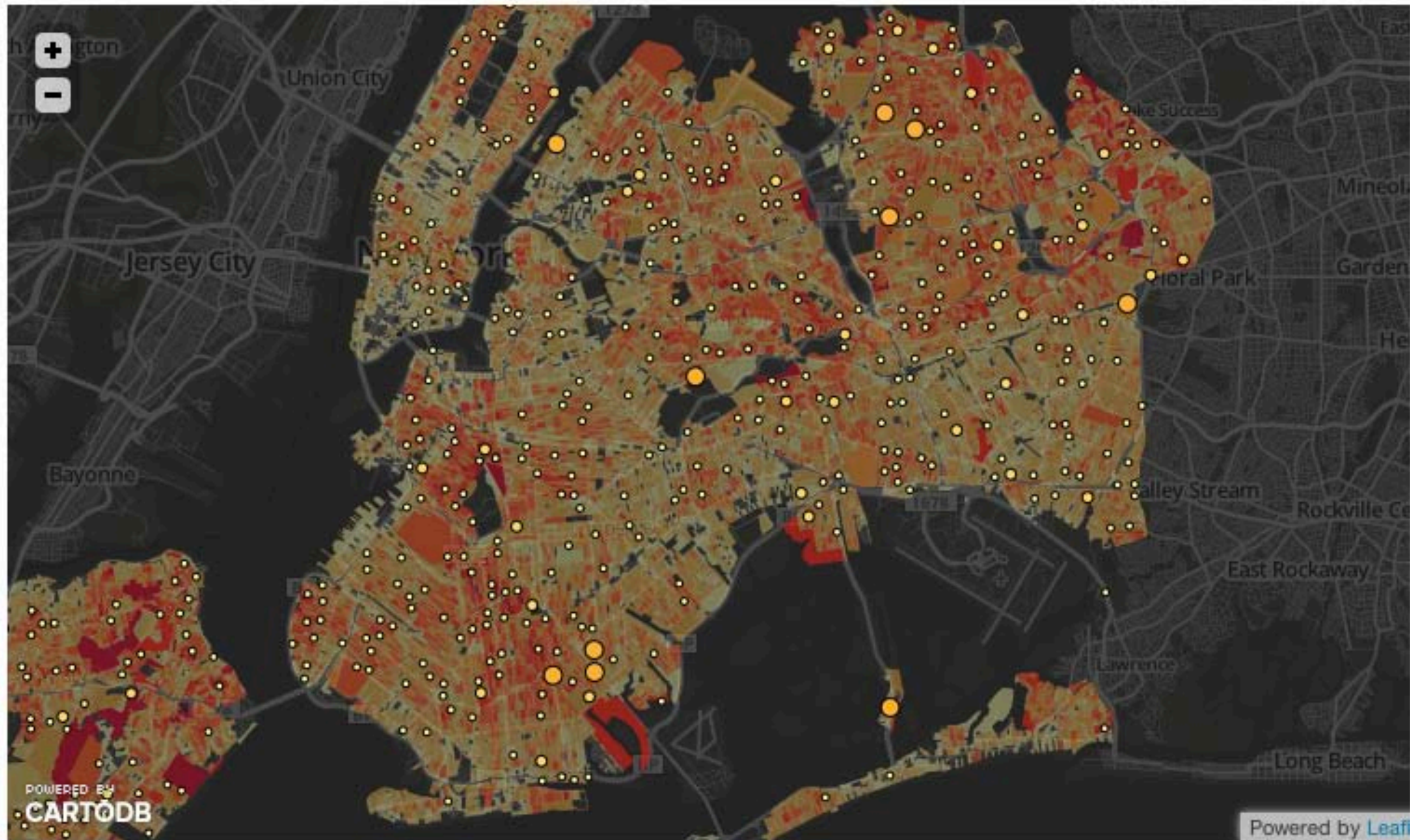
2) Expected # of FTE?

3) Weather

Density of the





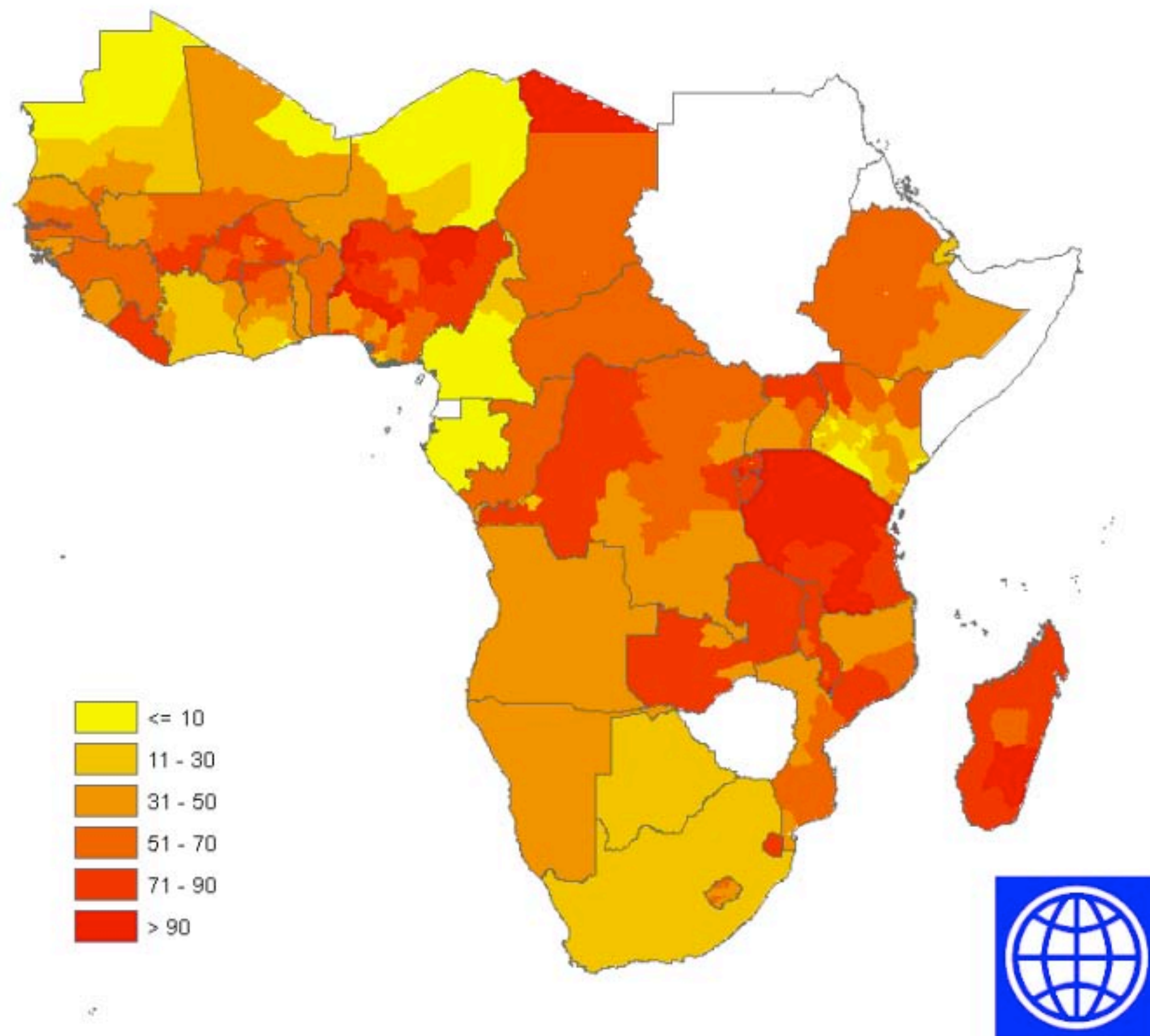
**Layers :**

Diversity by Census Block (chloropleth)

Common Tree Families

Tree Height by Census Block







Bangladesh  
Leading Poverty  
Indicator







ABOUT ONLINE SHOPPING

STORE SEARCH

SPECIALS

Boost your points

SHOPPING SERVICES

BUDS & BLOOMS

HOUSE BRANDS

GIFT CARD MALL

VITALITY

ENTERTAINING

COMPETITIONS

KOBO TOUCH

ELLE DECORATION SOLVE

ELLE DECORATION

PAMPERS

CATALOGUES

## Great prices, great products

We're committed to helping you get value for your money, which is why we offer you fantastic discounts on a wide range of our top quality products.

### Find all our current specials

Select your region

Select a store type

Select a department

Enter keyword

SEARCH

Brookes Oros Orange Squash

**R18.95**

PER 2L



VALID 16 APR - 21 APR

+ ADD TO SHOPPING LIST

Glenryck Pilchards Assorted

**R10.49**

PER 400G / 425G



VALID 16 APR - 21 APR

+ ADD TO SHOPPING LIST

Johnnie Walker Red Label Whisky

**R139.99**

PER 750ML



VALID 16 APR - 21 APR

+ ADD TO SHOPPING LIST

Nola Lite Dressing or Original Mayonnaise

**R16.79**

PER 780G / 750G



Wellington VO Brandy (NOT SOLD ON SUNDAYS IN CERTAIN REGIONS)

**R75.99**

PER 750ML



Bonnita Mozzarella

**R59.99**

PER KG

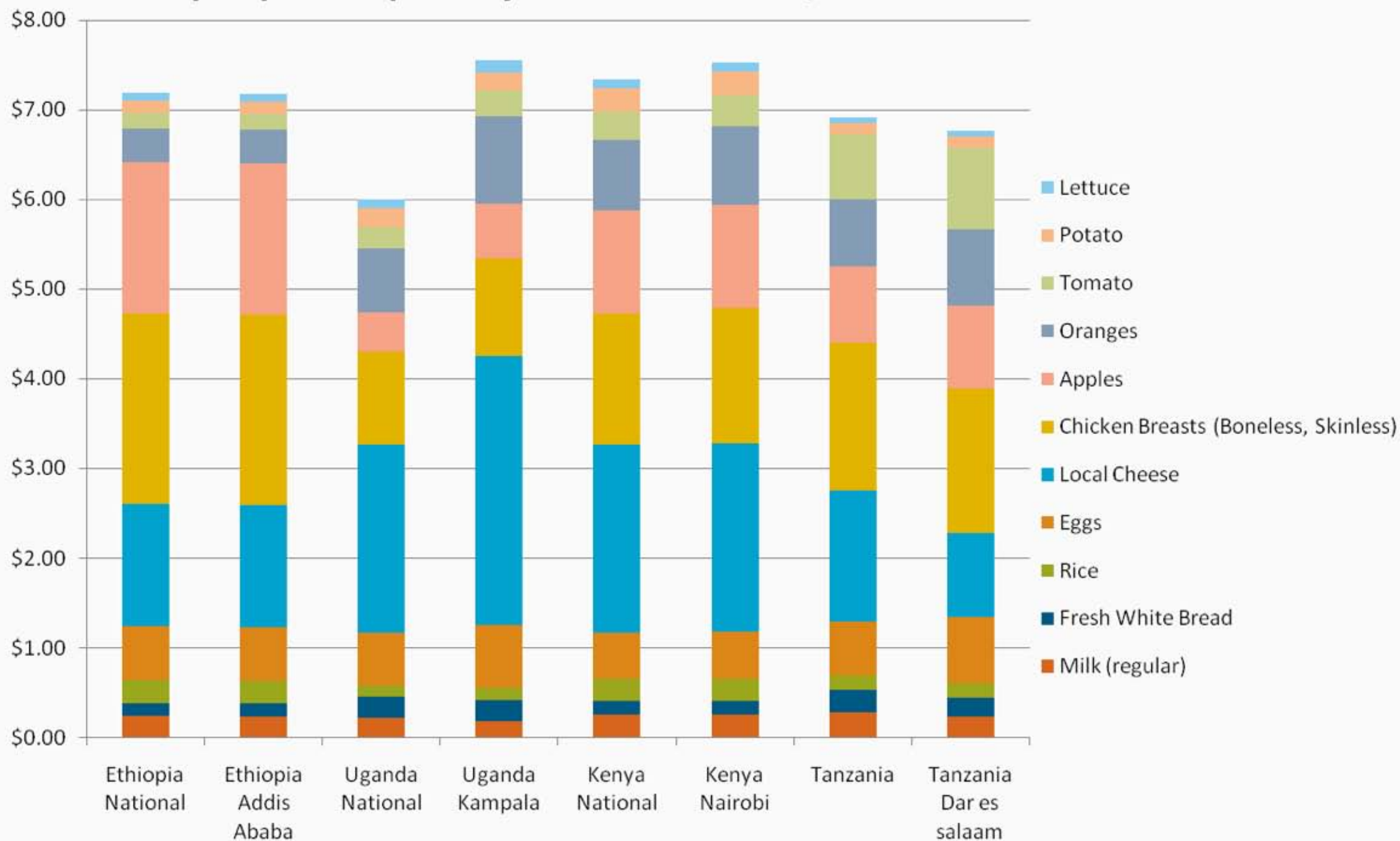
double points



kobo

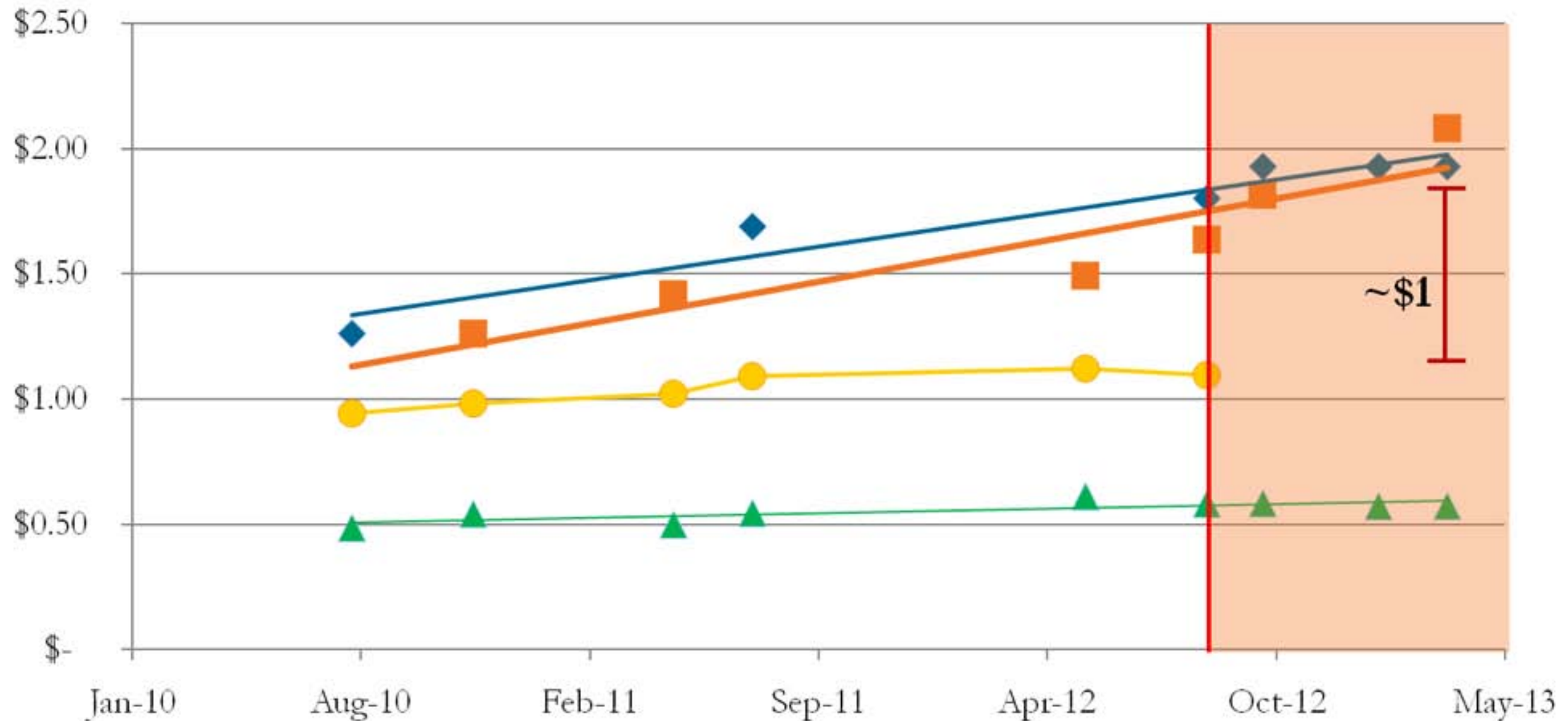


## Price per person per day for a balanced 2,000 calorie diet.





# Price of Rice per kg in Indonesia vs World Price



◆ Si Pulen Crystal  
▲ World Price  
— Linear (Si Pulen Crystal)  
— Linear (World Price)

■ Topi Koki Setra Ramos  
● FAO  
— Linear (Topi Koki Setra Ramos)



**DataKind**  
USING DATA IN THE SERVICE OF HUMANITY

Pivotal



